



XP-1 - DRIVER 1

XP-1 Head Design / Line-Up



	DRIVER		
Number	9.5	10.5	HL(12)
Length	45.25		
Total Weight	D1/285 (R)		

XP-1 1W Technology

W Slots

ET40 for XP-1

5 FANG Ribs

DRAW BIAS

P-SAT



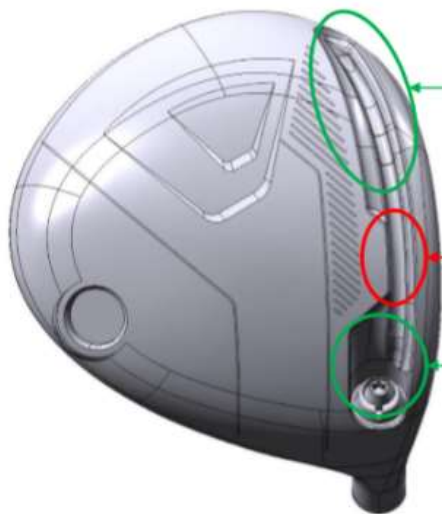
- High Initial Velocity
- High Launch Angle
- Low Spin
- Draw-biased

The model features high forgiveness to mis-hits and high distance performance

W "Double" Slots

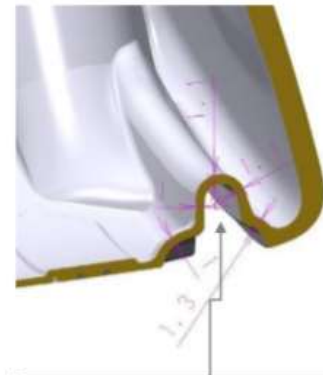
- Low Spin
- High Launch Angle

- Large repulsion area leads to long distance at mis-hit
- Better Gear effects on both of right and left



Toe/Heel side
 Against mis-hits
 - Keep initial velocity
 - Better gear effect

Center Part
 Reduce power-loss
 by too much flexion.

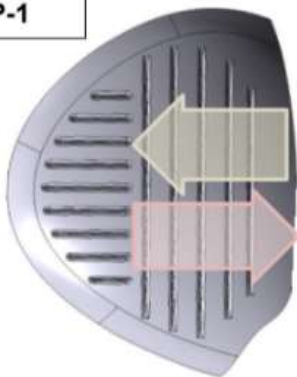


Narrow round top of the slots
 More deflection effect.

XP-1 for ET40 Carbon Crown

- Low CG leads to large launch angle
- Maximize gear effect leads to fast initial velocity.

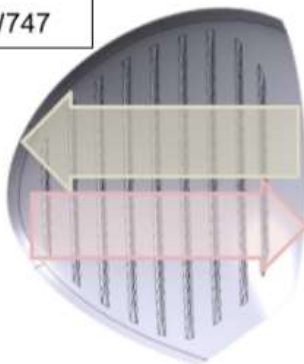
XP-1



Better responsiveness of repulsion is on crown.
 - Deflects on the face instantly.
 - High crown repulsion at back ribs.



TW747



Designed for better repulsion with large hit area.

Carbon Crown
Low Centre of Gravity
 Good Sounds
 +
 Powerful repulsion

5 FANG Technology

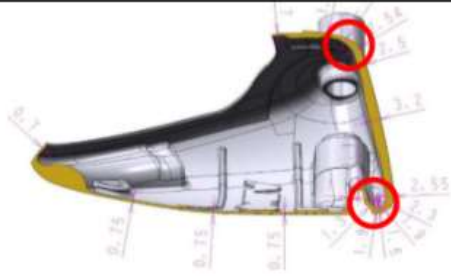
Fast Initial Velocity

Large repulsion area by face + α



3 ribs on crown side
 Large repulsion area included with face and the upper lip – Better repulsion and high trajectory

Thickness design of face lip
 Thick face & Thinner face lip
 ⇒ Achieve CT value 240±10



2 ribs at sole side
 Strong stress endurance at shot of bottom.



DRAW BIASED - Inner Center Gravity Design-

More Draw Bias

Designed center of gravity with more CG angle

CG design for draw-bias
 CG design to achieve draw-bias leads to more forgiving and comfortable swing.



Larger CG angle
 Compare to TW747
 460 9.5 + 3.5°

P-SAT

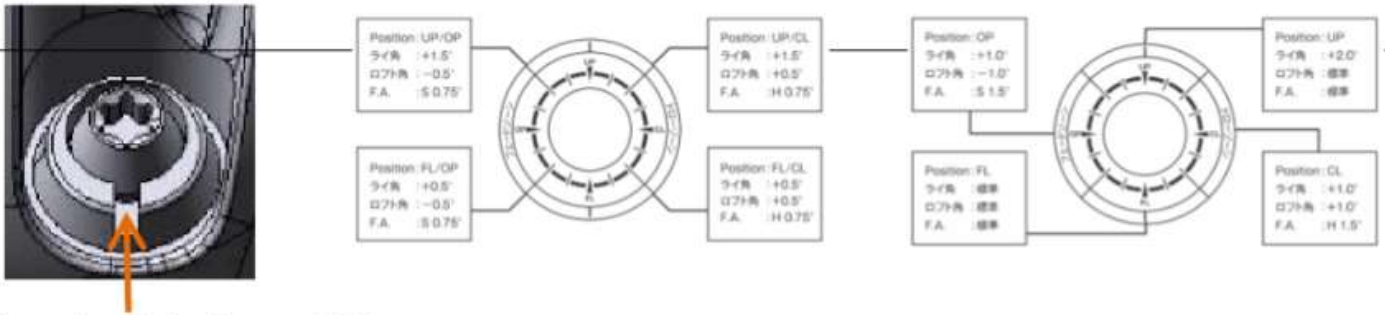
Remaining shaft direction after angle adjustment leads to consistent shaft performance.

PRECISION SPINE ALIGNMENT TECHNOLOGY (Precision Spine Management System)

All HONMA products' spines are designed, developed and manufactured in the direction of 6 o'clock.

Non-Routing System

HONMA PROPRIETARY angle adjustment system – It's able to adjust the angle with remaining shaft spin, manufactured and managed strictly at SAKATA.



Align the pawl on the knob, screw 360° once.



XP-1 Shaft

VIZARD43

Extra High Performance Shaft

Light and high CPM designed shaft for true abilities of XP-1 target golfers.

Model	Total Weight (g)	CPM (cpm)	Torque (deg)	Club Length (inch)
VIZARD43	42.5	212	6.8	45.25

Carbon fiber material by Toray "Dumping material" is used
⇒ Save power loss

High endurance & High elasticity fiber Toreaca
● T1100G is used.
⇒ Fully & vertically covered over layers



WOOD

Number	1W		
Head material	Body & Face : Ti6-4+Carbon ET40 carbon (ET40)		
manufacturing process	Body Face : Monobloc Casting		
Loft (deg.)	9.5°	10.5°	HL (12°)
Lie angle (deg.)	59.5		
Head volume(cc)	460		

Shaft		VIZARD 43		
Length (inch)		45.25	45.25	45.25
Swing Weight	R	D-1	D-1	D-1
	SR	D-1	D-1	D-1
	S	D-1.5	D-1.5	D-1.5
Total Weight	R	285	285	285
	SR	291	291	291
	S	293	293	293



Grip	Size	HONMA Rubber A61 BK/WH
	Weight	44g

